

Village of Elizabeth, IL

ENGINEER:

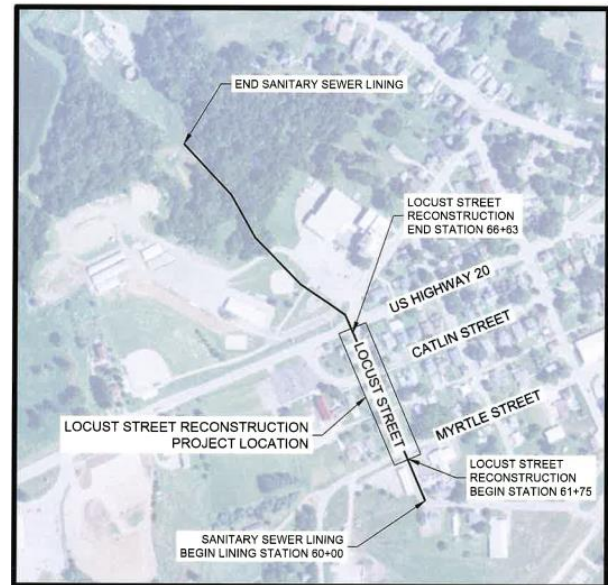
Jared Fluhr, Project Engineer
Phone: (563) 424-3697
jfluhr@msa-ps.com

Scott Duckett, Field Engineer
Phone: (309) 945-2034

CONTRACTOR:

Fischer Excavating Inc.
Wayne Fischer, Project Manager/Owner
Chad Swalbe, Superintendent

DATE: January 5, 2021



LOCUST STREET SANITARY SEWER

The intent of this letter is to inform you of the construction about to take place on Locust Street. Construction is anticipated to begin **on or around January 8, 2021**. This update will discuss the project scope, project schedule, driveway access, mail service, garbage service, emergency services, traffic control, road closures, and future project updates.

MSA Professional Services, Inc. (MSA) is the consulting engineer for the Village of Elizabeth and is the Village's authorized representative on the project. Scott Duckett will be on-site part time during construction to inspect the Contractors' work and assist in answering any questions that residents may have.

PROJECT SCOPE

The project scope includes replacement of 2 – 32' deep brick sanitary sewer manholes, sanitary sewer cure-in-place-pipe (CIPP) lining, and roadway reconstruction. Once the 2 deep sanitary sewer manholes are replaced, the old hand-mined tunnel underneath US Highway 20 will be filled with flowable material, to limit the risk of future tunnel failures and sink holes. Following utility work, Locust Street will be reconstructed with concrete curb and gutter, storm sewer, and hot-mix-asphalt pavement.

FUNDING OVERVIEW

The total project is estimated to cost approximately \$1,134,000 (includes engineering, grant admin., and contingency). The Village has obtained USDA Rural Development funding, in which \$746,000 has been awarded as a grant. The remaining \$388,000 will be financed through a low-interest USDA bond at 1.125 interest rate.

PROJECT SCHEDULE (TENTATIVE)

Fischer Excavating (Contractor) will begin mobilizing equipment and materials to the site this week. The contractor plans to begin excavations for the 2 deep manholes, which will take several weeks. The water main replacement along Locust Street is being completed as part of the Catlin Street Reconstruction project, which is anticipated to begin in late spring. Construction includes the following estimated schedule:

Sanitary Sewer & Manhole Replacement
CIPP Lining
Water Main & Storm Sewer Replacement
Roadway Reconstruction

January - February
February - March
March - April
Spring/Summer 2021

PROJECT UPDATE

Substantial completion is scheduled for *August 13, 2021*. Final completion, which includes project closeout, is scheduled for *November 3, 2021*.

DRIVEWAY ACCESS

Residents will be able to access their driveways throughout most of construction, however, driveways may not be accessible periodically while underground utility installation is taking place. Once preparation for paving begins, driveways will likely not be accessible for an approximate 5-10 day period while driveway aprons are replaced. Fischer Excavating will notify residents when their driveways will be affected by construction. When driveways will not be accessible during construction operations, it is recommended that vehicles are parked out along side streets or alleys. Parking along the roadway within the construction areas will not be allowed. If special access or parking accommodations are required, please notify the Contractor or Engineer at your earliest convenience.

MAIL & GARBAGE SERVICES

MSA and Fischer Excavating will notify the Post Master of the USPS in Elizabeth of the construction taking place. Fischer Excavating will make accommodations to allow the mail to be delivered as usual. If any mailboxes need to be temporary relocated, Fischer will coordinate with USPS. If you have any questions regarding mail service, please contact the Post Master at (800) 275-8777.

Fischer Excavating will also notify the solid waste disposal company. Please place your waste containers along the roadway as you normally would, and the Contractor will coordinate relocation if required. If any problems arise with pickup, please contact Montgomery Trucking at (815) 777-0672.

EMERGENCY SERVICES

The Village will notify the Fire Department and Emergency Services of roadway closures and detours. Emergency Services will be accommodated to the greatest extent possible at all times.

TRAFFIC CONTROL & DETOUR ROUTE

Locust Street will be **closed to through traffic** during most construction activities within or adjacent to the roadway. The intersection of Catlin Street and Locust Street will also be closed. If the roadway is open to local traffic, only vehicles accessing properties within the closed section of roadway will be allowed access into the closed sections of roadway. A detour route for truck traffic and through traffic will be posted on Ash Street. The detour route, road closures, and traffic patterns will be monitored and adjusted as required if safety concerns arise.

Traffic control devices will be installed for your safety, and we ask that all residents be courteous and obey all traffic control and work zone speed limits. We also ask that residents be aware of construction equipment and activities, and please exercise safety in and around the construction zones.

Project updates will be posted on the Village's website throughout construction. However, **if you wish to receive project updates (via email)** or be contacted directly regarding water shutoffs, driveway access, or construction issues, please send your name, address, email address and phone number to jfluhr@msa-ps.com. If any questions or concerns arise during construction, please feel free to contact myself or Fischer Excavating on-site.

The Village and I look forward to a successful and timely completion to this project, and we appreciate everyone's patience and understanding for any inconveniences caused by construction activities.

Respectfully,
MSA Professional Services, Inc.

Jared Fluhr, PE
Project Engineer